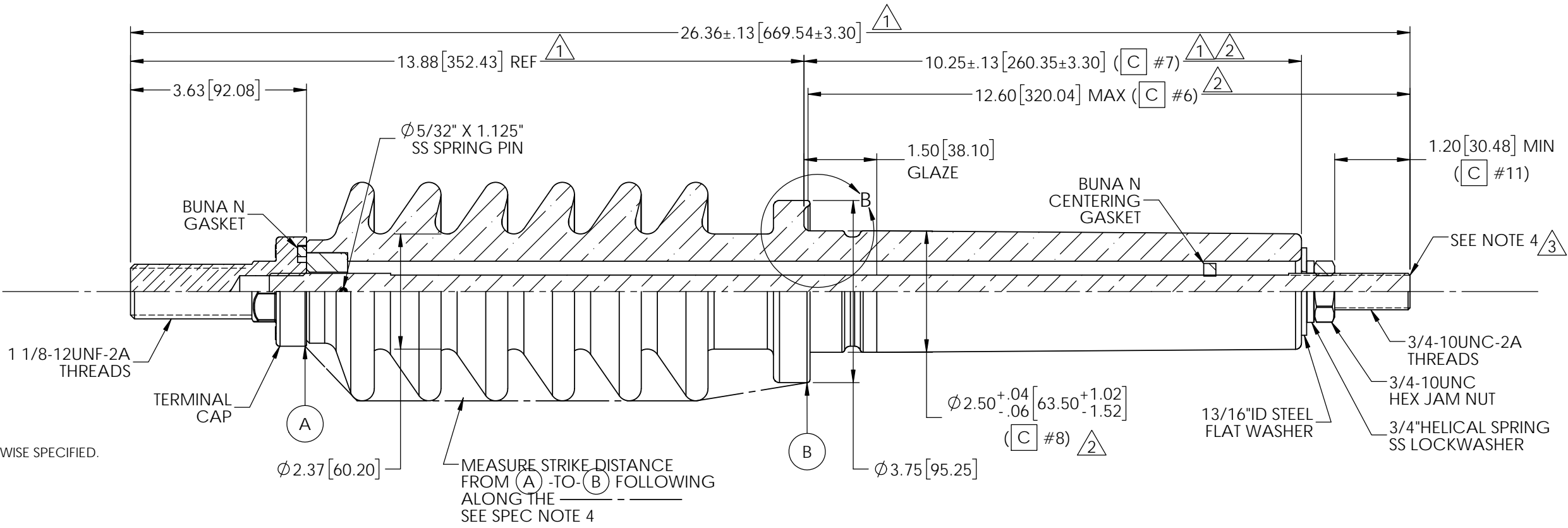
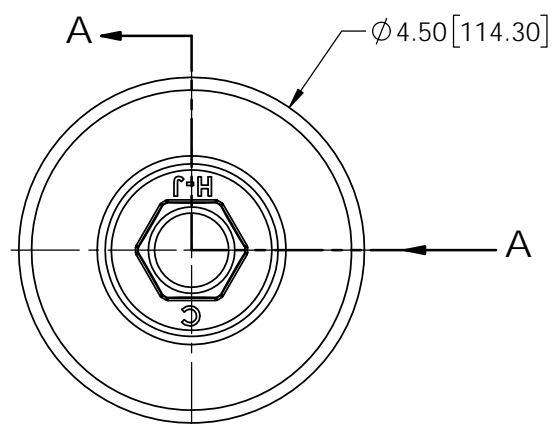


DETAIL B

REVISIONS					
REV.	DATE	ECN #	DESCRIPTION	BY	APPROVED
1	11/18/2014	HJ14-245	26.36 WAS 26.53, 13.88 WAS 14.00, 10.25 TOL. WAS ±.25, STRIKE WAS 10.60	CLS	BLB
2	9/1/2015	HJ15-198	ADDED GN 3. ADDED CTO'S 1-THRU-11	TJF	BLB
3	1/5/2016	HJ15-265	ADDED STUD CENTERING NOTE	CLS	JDD
4	11/18/2022	HJ22-227	REMOVE PART NUMBER REFERENCE	CLS	ES



SECTION A-A

- NOTES:
1. ALL DIMENSIONS ARE REFERENCE ONLY UNLESS OTHERWISE SPECIFIED.
 2. (C) - CRITICAL CHECK (CTQ)
 3. STUD MUST BE CENTERED IN PORCELAIN WITHIN .13"

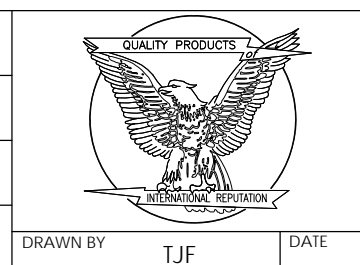
MATERIAL:
 TERMINAL CAP - C37700 OR HPb59-1 - TIN PLATED
 STUD - COPPER C11000

- PORCELAIN NOTES:
1. WET PROCESS ELECTRICAL PORCELAIN.
 2. GRAY GLAZE MUNSELL 5BG 7.0/0.4
 3. TOLERANCE 3% WITH NOTHING LESS THAN .03[.76] UNLESS OTHERWISE NOTED.

- SPECIFICATIONS:
1. RATED VOLTAGE.....15KV
 2. BASIC IMPULSE LEVEL.....110KV (C #9) (2)
 3. NOMINAL CURRENT RATING.....688 AMPS
 4. STRIKE DISTANCE (MIN.).....10.40"[264.16mm] (C #2) (1, 2)
 5. CREEP DISTANCE (MIN.).....18.50"[469.90mm] (C #10) (2)
 6. APPROXIMATE WEIGHT.....14.4 LBS
 7. DESIGN TEST PER C57.19.00 - 2004 (DRY & WET WITHSTAND).
 8. DESIGN TEST PER C57.15 - 2009 (FULL-WAVE IMPULSE WITHSTAND).

PROPRIETARY AND CONFIDENTIAL
 THE INFORMATION CONTAINED IN THIS DRAWING IS THE SOLE PROPERTY OF H-J ENTERPRISES, INC. ANY REPRODUCTION IN PART OR AS A WHOLE WITHOUT THE WRITTEN PERMISSION OF H-J ENTERPRISES, INC. IS PROHIBITED.

TOLERANCES (EXCEPT AS NOTED)	
DECIMAL	±.032/.8mm
FRACTIONAL	±
ANGULAR	±2°



H - J ENTERPRISES, INC. 3010 HIGH RIDGE BLVD. HIGH RIDGE, MO. 63049 USA PHONE 1-636-677-3421 FAX 1-636-376-1915			
15KV-110BIL BUSHING ASSEMBLY 3/4-10UNC THREADS			
MATERIAL (SEE DRAWING)			
CHK'D JDD	APP'D 01/05/16	DRAWING NO.	
SCALE N.T.S.	DATE 10/27/14	AS1829-002	

DRAWN BY TJF